

# Biota Max™ Soil Probiotic

## Application Instructions:

Many application types are available. Please use the application instructions that are best for your location and equipment.

### Standard Application - Root Growth:

1. Calculate water needed  
For small gardens, use 1 quart of water (minimum)  
For larger areas, use 1 gallon or more
2. Add 1 Biota Max tablet to water - allow 2-3 minutes to dissolve.  
The dissolving tablet mixes the product for you!  
(use a partial tablet for very small projects - break the tablet as needed)
3. Spray the soil evenly around the base of plants (mist setting gives better distribution).
4. Plant height determines spray area. Spray within the drip line, or:

1-2 feet high	-	Spray 1 foot around plant
3-5 feet high	-	Spray 2 feet around plant
6-10 feet high	-	Spray 3 feet around plant
11-20 feet high	-	Spray 4-5 feet around plant
Over 20 feet	-	Spray 6-9 feet around plant

After treating, use the remaining product within 2 weeks.

### FOR BEST RESULTS:

- Apply early if possible. Growing roots gain the best benefits!
- Apply at the same time as fertilizers.
- **DO NOT** apply at the same time as fungicides or other chemicals.

### Standard Application - Full Plant, Root and Leaf:

1. Calculate water needed  
For small gardens, use 1 quart of water (minimum)  
For larger areas, use 1 gallon or more
2. Add 1 Biota Max tablet to water - allow 2-3 minutes to dissolve.  
The dissolving tablet mixes the product for you!  
(use a partial tablet for very small projects - break the tablet as needed)
3. Spray the soil evenly on the entire plant (mist setting gives better distribution).
4. The active ingredient of Bacteria and Fungi will drip from the leaves to the soil within the drip line of the plant.

### FOR BEST RESULTS:

- Spray upwards, to cover the underside of the leaf - this will reduce runoff from rain and watering.
- After the first initial application, spray follow up applications at 1/4 dosage every 7 - 30 days, depending on crop and weather.
- Apply early if possible. Growing roots gain the best benefits!
- Apply at the same time as fertilizers.
- **DO NOT** apply at the same time as fungicides or other chemicals.

## Specific Use Applications:



#1 Fill water can or pressure sprayer with water. Add tablet, and let dissolve.



#2 Apply to seeds.

**5 MIN.**

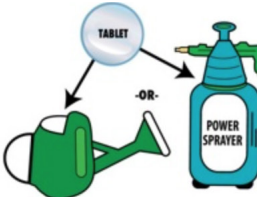


#3 Mix evenly, then dry.

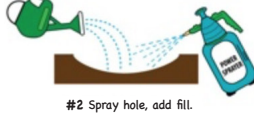


#4 Plant seeds.

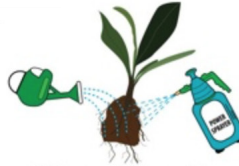
## Transplanting Plants with Root Ball



#1 Fill water can or pressure sprayer with water. Add tablet, and let dissolve.



#2 Spray hole, add fill.



#3 Remove plant from container, spray root ball.



#4 Transplant, backfill soil, then spray ground surface. Apply fertilizer as directed.

## Transplanting Smaller Plants without Root Ball:



#1 Add product to water, stir.



#2 Fill bowl.

**1 MIN.**



#3 Soak bundles.



#4 Transplant.



Apply 1 week before planting.



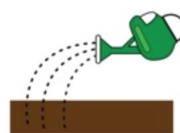
Water volume is based on equipment speed and treatment area.

#1 Calculate water needed to apply product.

**2 MIN.**



#2 Add product to water, stir.



#3 Spray product on field.



#4 Plant seeds.

If the instructions you need are not included, please email [Bill@Custombio.biz](mailto:Bill@Custombio.biz) for specific application information.